



## MAIN CHARACTERISTICS

|                      |                  |
|----------------------|------------------|
| <b>Built Year</b>    | 2008             |
| <b>Refit Year</b>    | 2015             |
| <b>Hull Material</b> | GRP              |
| <b>Length</b>        | 23.40 M / 76'78" |
| <b>Beam</b>          | 5.50 M / 18'5"   |
| <b>Draft</b>         | 1.07 M / 3'50"   |
| <b>Lying</b>         | South of France  |
| <b>Registry</b>      | England          |

**1,000,000 EUR** 1,175,710 USD\*

\* Approximate price conversion

 Address:

3 Rue de la Loge L-1945 Luxembourg

 Contact

Thomas Peltier • P: +352.27.40.99.90 • M: +352.621.326.323

 E-mail:

t.peltier@seastemia.com

## DESCRIPTION

---

Unmistakably Lazzara has created a work of art with the LSX 75! You'll enjoy true pride of ownership behind the wheel of this beauty with sports-car-like performance that will leave you asking for more. Her striking rounded lines illustrate her perfect harmony and practical function. Unrivalled attention to detail and extremely well designed living solutions provides the utmost in yachting, safety and relaxation. Without the loss of comfort or privacy, this 4 stateroom, 5 head layout can comfortably accommodate 8 guests plus additional crew. A fully furnished galley equipped to provide all the comforts of home. Incredible performance with speeds up to 30 appx. knots is powered by very efficient Volvo IPS 600s.

## SPECIFICATIONS

---

### BOAT DETAILS

|                    |           |                   |                 |
|--------------------|-----------|-------------------|-----------------|
| <b>Boat Status</b> | Brokerage | <b>Built Year</b> | 2008            |
| <b>Refit Year</b>  | 2015      | <b>Lying</b>      | South of France |
| <b>Registry</b>    | England   |                   |                 |

### CERTIFICATION

|                      |     |                   |                         |
|----------------------|-----|-------------------|-------------------------|
| <b>Certification</b> | MCA | <b>Compliance</b> | Small commercial vessel |
|----------------------|-----|-------------------|-------------------------|

### BUILDER / DESIGNER

|              |            |                      |     |
|--------------|------------|----------------------|-----|
| <b>Model</b> | Lazzara 75 | <b>Hull Material</b> | GRP |
|--------------|------------|----------------------|-----|

### DIMENSIONS

|               |                  |             |                |
|---------------|------------------|-------------|----------------|
| <b>Length</b> | 23.40 M / 76'78" | <b>Beam</b> | 5.50 M / 18'5" |
| <b>Draft</b>  | 1.07 M / 3'50"   |             |                |

## MACHINERY

|                             |              |                             |                            |
|-----------------------------|--------------|-----------------------------|----------------------------|
| <b>Engine Maker</b>         | Volvo        | <b>Drive</b>                | Pod Drive                  |
| <b>Number of Engines</b>    | 4            | <b>Propulsion Mode</b>      | Diesel                     |
| <b>Engine(s) type</b>       | Inboard      | <b>Engine(s) power</b>      | 435.00 hp                  |
| <b>Engine(s) model</b>      | VOLVO IPS D6 | <b>Main Generator Maker</b> | 240 V/50 cycle 23KW KOHLER |
| <b>Main Generator Power</b> | 23.00 KW     |                             |                            |

## PERFORMANCES

|                       |             |                                 |             |
|-----------------------|-------------|---------------------------------|-------------|
| <b>Cruising Speed</b> | 24.00 knots | <b>Max Speed</b>                | 30.00 knots |
| <b>Range</b>          | 250.00 NM   | <b>Cruising Speed for Range</b> | 24.00 knots |

## TANKAGES

|                    |                                  |                    |                                |
|--------------------|----------------------------------|--------------------|--------------------------------|
| <b>Fuel</b>        | 3,141.55 liters / 830.00 US gals | <b>Water</b>       | 757.00 liters / 200.00 US gals |
| <b>Water Maker</b> | 150.00 liters / 39.60 US gals    | <b>Black Water</b> | 379.00 liters / 100.06 US gals |

## ACCOMODATIONS

|               |          |               |                    |
|---------------|----------|---------------|--------------------|
| <b>Sleeps</b> | 8 guests | <b>Berths</b> | 4 simple, 2 double |
|---------------|----------|---------------|--------------------|

ACCOMODATIONS

Crew 2

RECREATIONAL EQUIPMENT

---

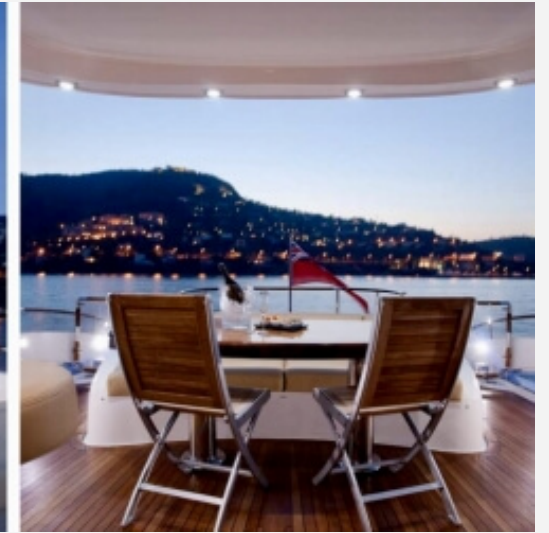
Chase Boat: 1 x Cappelli 7.7m with outboard engine Suzuki 250HP

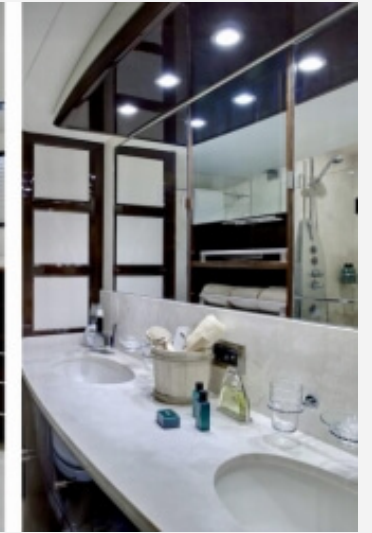
2x Wakeboards for both Adults and Children

water skies

3x Eversea (underwater propellers

full set of gears. and snorkeling equipment







## Key features

- The starboard and port cabins are convertible and can either be set up with 1 double or 2 single beds
- The Salon features TV, Bose surround, play station 3, DVD, stereo, UK sky and Apple TV
- Equipped with a Capelli 7.7m 770WA chase boat
- Zero speed stabilizers
- Refit in 2015

## Length

23.39m (76.9ft)

## Build

2008, Lazzara

## Refit

2015

## Cruising Speed / Fuel Consumption

About 16 knots / 210 litres per hour

## Crew

Captain plus 2 crew

## Guests &amp; Accommodation

6 Guests (1 King, 2 Convertible)

## Water sports

Chase boat: 1 x Capelli 7.7m 770WA with a Suzuki 250HP engine  
 2 x Wakeboard for both adults and children  
 Water skies  
 2 x Kneeboard  
 Blow up ring  
 3 x Eversea (underwater propellers)  
 Tubes  
 Snorkelling equipment

## Entertainment

TV, stereo, DVD player and i-pod docking stations. UK sky TV and Apple TV.

Bose surround, play station 3, DVD, stereo, UK sky and Apple TV.

