



MAIN CHARACTERISTICS

Builder	Palmer Johnson
Designer	Palmer Johnson, Nuvolani & Lenard
Built Year	2008
Hull Material	Aluminium
Length	37.87 M / 124'25"
Beam	7.32 M / 24'1"
Draft	1.98 M / 6'50"
Displacement	145.00 tons
Lying	France

5,500,000 EUR 6,466,405 USD*

* Approximate price conversion

 Address:

3 Rue de la Loge L-1945 Luxembourg

 Contact

Thomas Peltier • P: +352.27.40.99.90 • M: +352.621.326.323

 E-mail:

t.peltier@seastemia.com

DESCRIPTION

A timeless "Avant-Garde" Novali Lenard design combined with a strongly Aluminium built at Palmer Johnson in US make this 120 Model an excellent choice in its category. Currently commercially operated on charter this 37 metres fast semi planning vessel is probably the best pick-up between all PJ availabilities on the market, thanks to its clean history its relative low use for its age and its overall esthetical and technical status. Please, call us for more information.

SPECIFICATIONS

BOAT DETAILS

Built Year	2008	Lying	France
-------------------	------	--------------	--------

CERTIFICATION

Certification	Loyd	Category	A
----------------------	------	-----------------	---

BUILDER / DESIGNER

Builder	Palmer Johnson	Designer	Palmer Johnson, Nuvolani & Lenard
Naval Architect	Palmer Johnson	Model	IZUMI
Hull Type	Semi Displacement	Hull Material	Aluminium

DIMENSIONS

Length	37.87 M / 124'25"	Beam	7.32 M / 24'1"
Draft	1.98 M / 6'50"	Displacement	145.00 tons

MACHINERY

Engine Maker	MTU	Number of Engines	2
Propulsion Mode	Diesel	Engine(s) type	Inboard
Engine(s) power	2,750.00 hp	Engine(s) model	2 x MTU 12V4000 M90 2750 hp
Engine 1 hours	3,137.00 H.	Engine 2 hours	3,153.00 H.
Main Generator Maker	KILO PACK	Main Generator Power	62.00 KW
Main Generator Hours	7,127.00 H.	Auxiliary Generator Maker	KILO PACK
Auxiliary Generator Power	62.00 KW	Auxiliary Generator Hours	7,349.00 H.
Stabilizer Type	Hydraulic Thins	Stabilizer Maker	TRAC Stabilizer system, dual fin type
Water Maker	1 x G & R Gruppo 2 Jet 518 + 2 x 30 Gallon + 1 x Dockside	AC type	Reverse cycle
AC capacity	192,000.00 BTU		

PERFORMANCES

Cruising Speed	24.00 knots	Max Speed	29.00 knots
Range	900.00 NM		

TANKAGES

Fuel	29,072.00 liters / 7,675.01 US gals	Water	3,547.00 liters / 936.41 US gals
-------------	-------------------------------------	--------------	----------------------------------

ACCOMODATIONS

Sleeps	7 guests	Berths	1 simple, 3 double
Bathroom	4	Crew	5

LAYOUT / INTERIOR

- 1x Master Cabin
- King-size coil spring mattress
- Upholstered headboard of fine Rubelli fabric or leather
- Nightstand have Bronzed Glass, premium marble or mirror
- Desk/ vanity has flip-up mirror
- Entertainment cabinet features a flat screen TV and media storage
- High-gloss cross-grained wood accents on bunk, desk, and cabinet tops
- Built-in sofa with cushions and throw pillows, upholstered in fine fabrics
- Walk-in dressing room

- 1x Owner's Suite

- Vanity countertops are premium marble, and feature showpiece sinks of glass or marble
- Soles are premium marble, accentuated with marble accent and seats
- Shower doors are frameless with clear glass
- Accessories include mirror, towel bars, robe hooks, soap dishes, toilet paper holder
- 2x Upper vanity cabinets
- Bidet with Zuchetti fixture

- 2x VIP Cabins
- 1x Convertible cabin which acts as a day room (1x single berth)
- Built-in berths with drawers, and additional storage
- Mattresses are coil spring type
- Nightstands have wood cabinet top inset with marble, glass or mirror
- Fine leather or Rubelli fabric upholstered headboards
- Entertainment cabinet
- Cedar lined hanging lockers
- Shelving, storages per plans
- Distinctive upholstered panel overhead
- Vanity countertop are premium marble or glass, and feature glass or marble sink
- Showers have marble accents and frameless glass shower doors
- Bath accessories include mirror, towel bars; robe hooks, soap dishes, toilet paper holder
- Upper vanity cabinet

COMMUNICATION & NAVIGATION EQUIPMENT

Navigation equipment

- 1x 4.5" magnetic compass
- 1x Autopilot with gyro
- 1x Furuno Radar
- 1x Furuno Sonar
- 1x Chart plotter System
- 1x Instrument package
- Navigation lights with control panel, 24V, includes N.U.C lights, Aqua Signal Fixtures
- Features a helm console with flat screen displays, operator selected daylight monitors
- 4x CCTV cameras, monitoring
- Windshiled mullions wrapped with technical uphostery
- Windshield wipers with fresh water sprayer, windshield defrosters

Communication Equipment

- Satellite communication and WiFi capability
- Satellite televison
- 1x VHF receiver
- 2x Icom portable GMOSS radios
- 5x Kenwook handheld UHF radio
- 1x EPIRB

- 1x SART







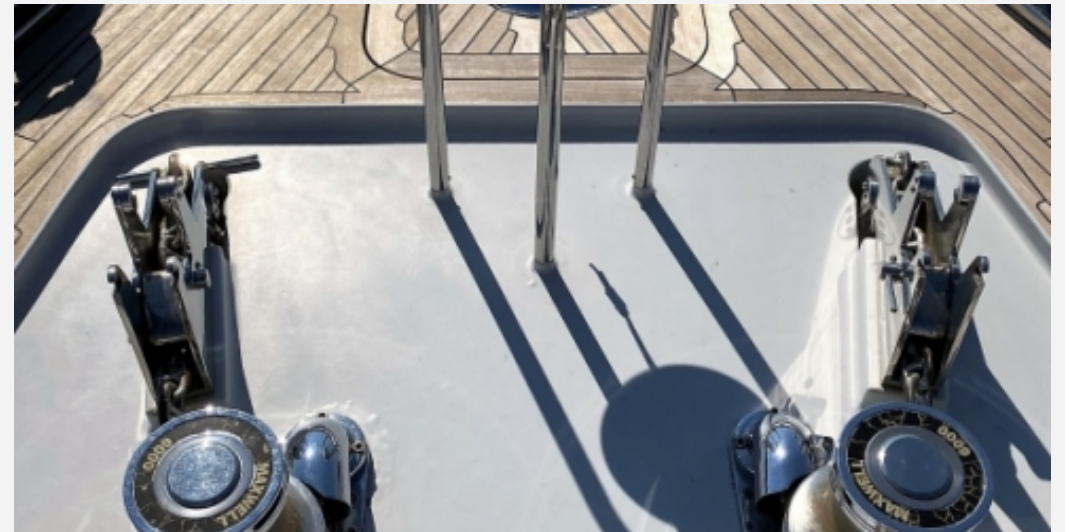
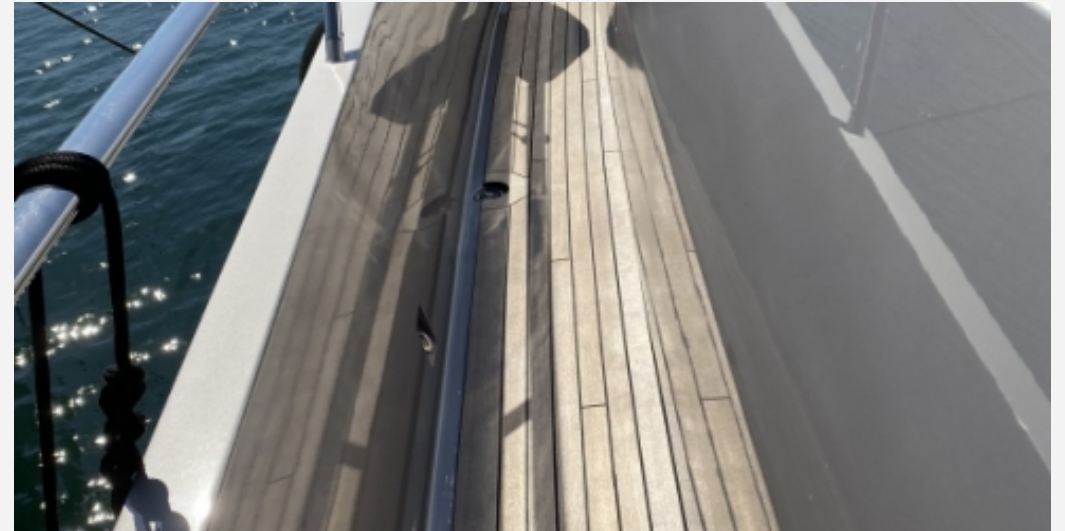




















37.87 M / 124'25"



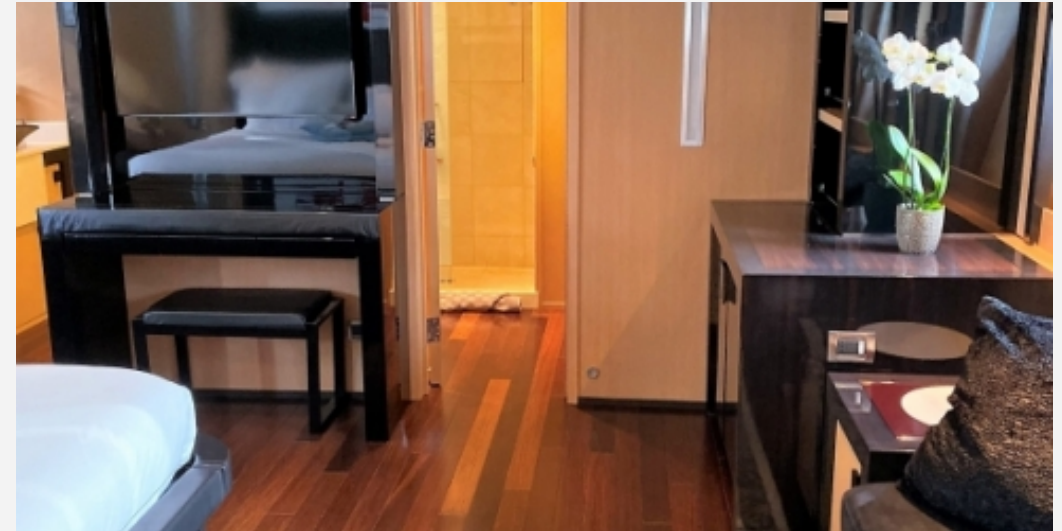
37.87 M / 124'25"









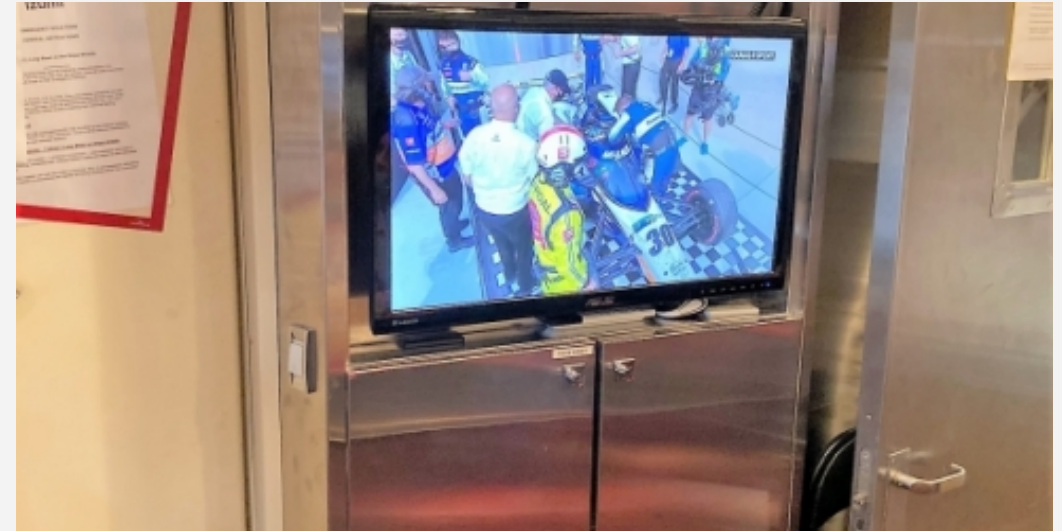




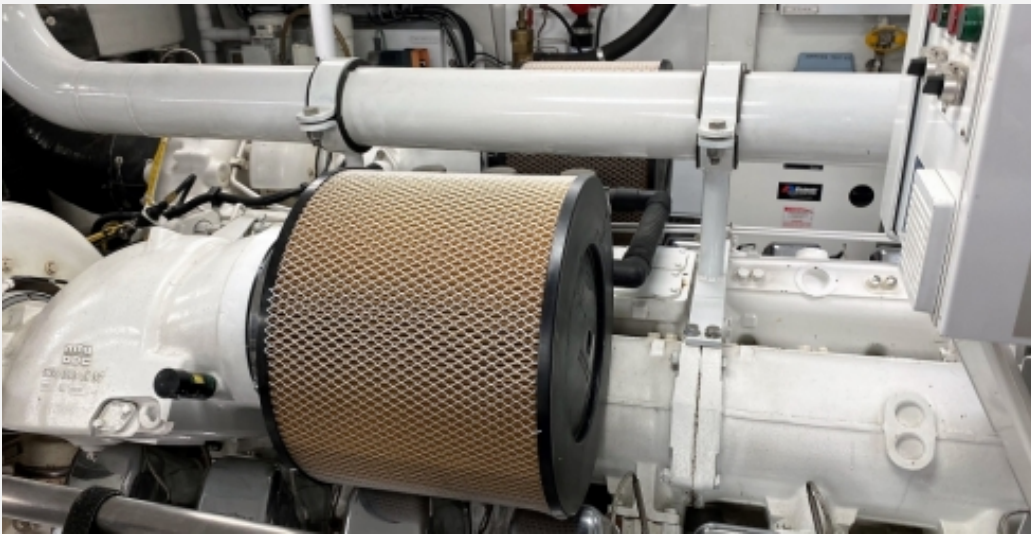
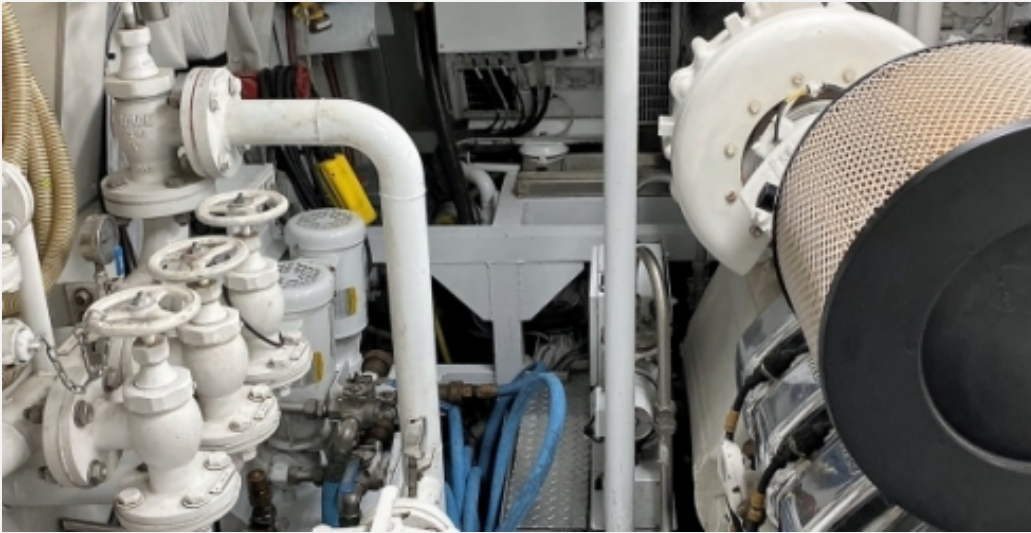








37.87 M / 124'25"



37.87 M / 124'25"







