



## MAIN CHARACTERISTICS

<b>Builder</b>	Baglietto
<b>Designer</b>	Francesco Paszkowski
<b>Built Year</b>	2015
<b>Hull Material</b>	Steel
<b>Length</b>	46.30 M / 151'90"
<b>Beam</b>	9.50 M / 31'17"
<b>Draft</b>	3.95 M / 12'96"
<b>Lying</b>	Italy, Livourne

**15,990,000 EUR** 18,799,603 USD\*

\* Approximate price conversion

 Address:

3 Rue de la Loge L-1945 Luxembourg

 Contact

Thomas Peltier • P: +352.27.40.99.90 • M: +352.621.326.323

 E-mail:

t.peltier@seastemia.com

## DESCRIPTION

---

Built by Italian yard Baglietto in 2015, this yacht is a full displacement steel and aluminium yacht, designed by Francesco Paszkowski. Large outdoor spaces are complemented by a voluminous and elegantly styled interior, featuring fine woods, neutral soft furnishings and silk carpets. Able to welcome up to 10 guests, with 9 crew on board, the yacht has 5 luxurious guest cabins including an impressive full master suite, 2 VIP cabins and 2 twins. The master is a beautiful space that includes his and hers bathrooms, a private study and a dressing room. The Baglietti 151 is a high-quality European-built yacht that is perfect for entertaining or simply enjoying life on the sea in luxurious comfort. Please, contact us for more information.

## SPECIFICATIONS

## BOAT DETAILS

<b>Main Category</b>	Mega yacht	<b>Built Year</b>	2015
<b>Lying</b>	Italy, Livourne		

## CERTIFICATION

<b>Certification</b>	Bureau veritas	<b>Category</b>	A
----------------------	----------------	-----------------	---

## BUILDER / DESIGNER

<b>Builder</b>	Baglietto	<b>Designer</b>	Francesco Paszkowski
<b>Hull Type</b>	Displacement	<b>Hull Material</b>	Steel

## DIMENSIONS

<b>Length</b>	46.30 M / 151'90"	<b>Beam</b>	9.50 M / 31'17"
<b>Draft</b>	3.95 M / 12'96"		

## MACHINERY

<b>Engine Maker</b>	Caterpillar	<b>Drive</b>	Shaft
<b>Propulsion Mode</b>	Diesel	<b>Engine(s) type</b>	Inboard
<b>Engine(s) power</b>	1,977.00 hp	<b>Engine(s) model</b>	2 x Caterpillar 3512B DITA - SWAC
<b>Engine 1 hours</b>	964.00 H.	<b>Gearboxes/Transmission</b>	2 x ZF 4661 - ratio 4.06
<b>Main Generator Maker</b>	2 x Kohler	<b>Main Generator Power</b>	125.00 KW
<b>Auxiliary Generator Maker</b>	Kohler	<b>Auxiliary Generator Power</b>	55.00 KW

## PERFORMANCES

<b>Cruising Speed</b>	12.00 knots	<b>Max Speed</b>	16.00 knots
<b>Range</b>	4,500.00 NM		

## TANKAGES

<b>Fuel</b>	80,000.00 liters / 21,120.00 US gals	<b>Water</b>	19,000.00 liters / 5,016.00 US gals
-------------	--------------------------------------	--------------	-------------------------------------

## ACCOMODATIONS

<b>Sleeps</b>	10 guests	<b>Berths</b>	2 simple, 3 double
---------------	-----------	---------------	--------------------

## ACCOMODATIONS

Bathroom	5	Crew	9
Crew Berths	9		

## LAYOUT / INTERIOR

- Master Suite with Master's Office on Main deck
- 2 x VIP Suites
- 2 x Twin convertible to Double on Lower Deck

## COMMUNICATION &amp; NAVIGATION EQUIPMENT

## Communication Equipment :

- SatCom (s) : SeaTel 3612 VSAT
- Satellite TV System : SeaTel 4004
- Telephone System : Panasonic Digital Hybrid w/ 23 extensions
- SSB : Sailor 6301 MF/HF (Pilothouse)
- VHF Fixed : (2) Sailor RT6222 DSC Class A (Pilothouse); (1) Sailor RT6215 DSC Class D (Crew)

- SatCom : Sailor 6006 GMDSS Message Terminal (Pilothouse)
- Intercom System : Off Ships Phone System
- Cellular Phone System : Tetular SX 6 GMS/GPRS
- Ships Computer : Yes
- Printer Epson XP-720 (Pilothouse)
- Internal Comm System : Vingator ETB-5 (4 stations)

#### Navigation Equipment :

- Radar 1 : Furuno FR-2117 BB X Band @ 96nm w/ ARPA (Pilothouse)
- Radar 2 : Furuno NavNet 3D X Band @ 64nm w/ ARPA (Pilothouse)
- Autopilot : Simrad AP 70 (Pilothouse)
- Gyrocompass : Simrad AR80 (Pilothouse)
- Compass : Cantalupi
- Depth Sounders ; Skipper GDS 101 (Pilothouse)
- Video sounder : Furuno NavNet 3D (Pilothouse)
- GPS (2) : Furuno GPS Navigator 150 ( Pilothouse)
- Plotter : Software : Transas
- NavTex : Furuno NX 700-B (Pilothouse)
- AIS : Transis M-3 (Pilothouse)
- Wind indicator : Furuno RD-33 (Pilothouse)
- Speed indicator : Furuno RD-33 (Pilothouse)
- Miscellaneous (4) : 19' Hatteland Monitors (Pilothouse); CCTV System w/ (4) Cameras (Port & Stdb sidedecks; Engine Room; Aft Deck)

## RECREATIONAL EQUIPMENT

---

- Castoldi tender 5.5M with 26 hours
- Castoldi tender 4.7M with 44 hours
- 2 x SeaDSoo

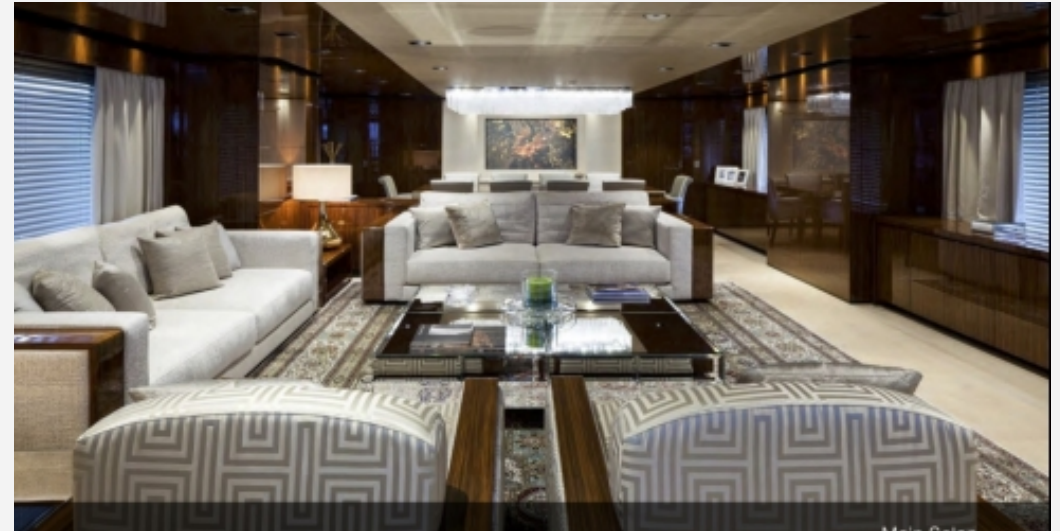




46.30 M / 151'90"







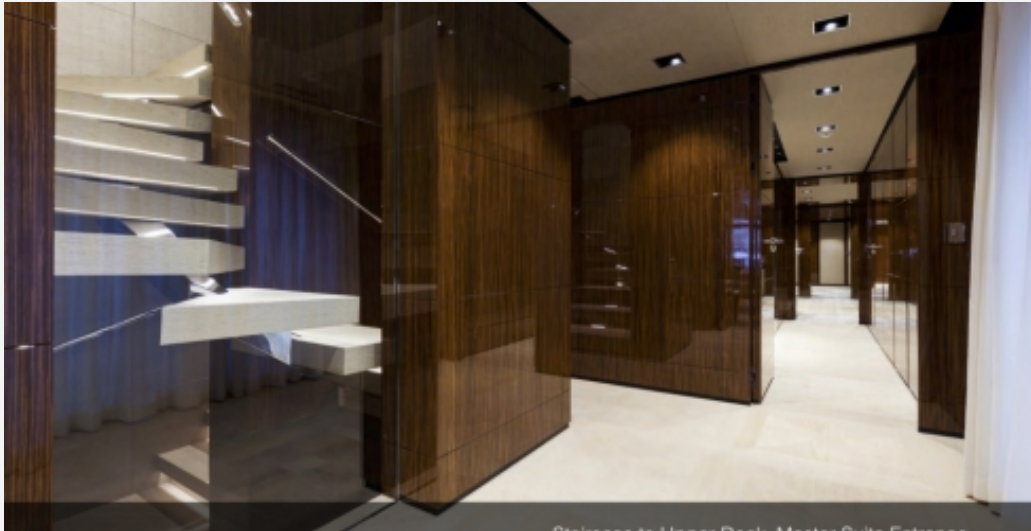












Staircase to Upper Deck, Master Suite, Entrance



Master Suite



Master Suite looking port side



