

19.06 M / 62'53"



CARACTÉRISTIQUES PRINCIPALES

Builder	Azimut Yachts
Designer	Stefano Righini
Built Year	2008
Length	19.06 M / 62'53"
Beam	4.98 M / 16'33"
Draft	1.53 M / 5'1"
Displacement	30.70 tonnes
Registry	Angleterre

520,000 EUR 611,369 USD*

* Conversion approximative

🏠 Adresse:

3 Rue de la Loge L-1945 Luxembourg

📞 Contact

Thomas Peltier • P: +352.27.40.99.90 • M: +352.621.326.323

✉ E-mail:

t.peltier@seastemia.com

19.06 M / 62'53"

SPÉCIFICATIONS

DÉTAILS DU BATEAU

Built Year	2008	Registry	Angleterre
-------------------	------	-----------------	------------

BUILDER / DESIGNER

Builder	Azimut Yachts	Designer	Stefano Righini
Model	Azimut 62 S		

DIMENSIONS

Length	19.06 M / 62'53"	Beam	4.98 M / 16'33"
Draft	1.53 M / 5'1"	Displacement	30.70 tonnes

MACHINERY

Engine Maker	Caterpillar	Drive	Shaft
Number of Engines	2	Propulsion Mode	Diesel
Engine(s) power	1,015.00 hp	Engine(s) model	C18

19.06 M / 62'53"

MACHINERY

Heures moteur 1	354.00 H.	Heures moteur 2	354.00 H.
Main Generator Maker	KOHLER	Main Generator Power	17.00 KW

PERFORMANCES

Cruising Speed	26.00 noeuds	Max Speed	32.00 noeuds
Range	250.00 NM	Cruising Speed for Range	26.00 noeuds

TANKAGES

Fuel	2,700.00 litres / 712.80 US gals	Water	900.00 litres / 237.60 US gals
-------------	----------------------------------	--------------	--------------------------------

ACCOMODATIONS

Sleeps	4 guests	Couette	2 simple, 1 double
Bathroom	2	Crew	1
Crew Berths	1		

19.06 M / 62'53"



19.06 M / 62'53"



19.06 M / 62'53"



19.06 M / 62'53"



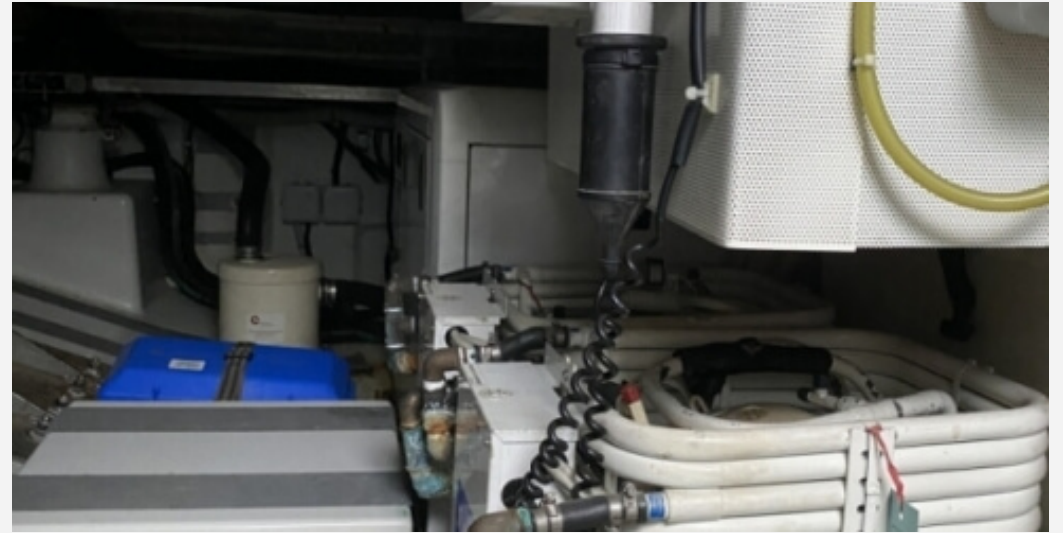
19.06 M / 62'53"



19.06 M / 62'53"



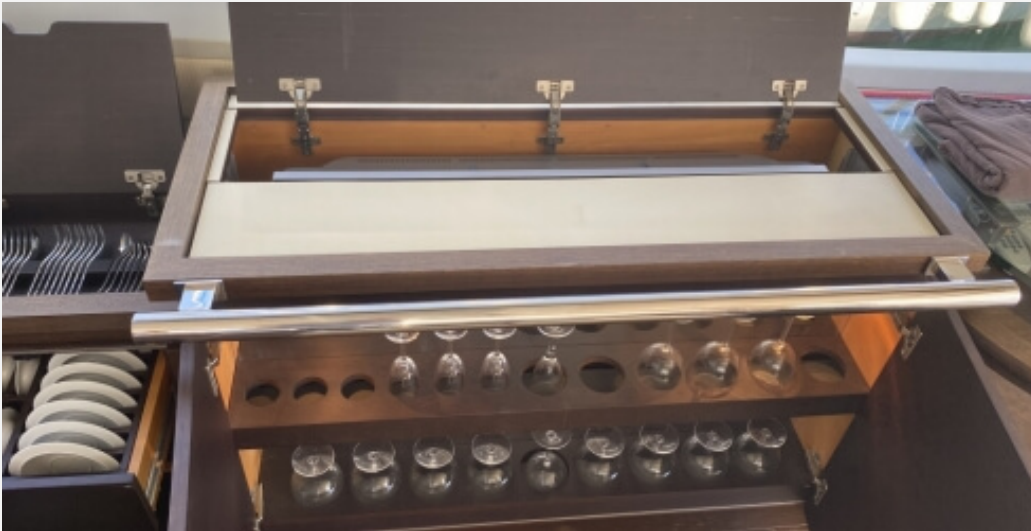
19.06 M / 62'53"



19.06 M / 62'53"



19.06 M / 62'53"



19.06 M / 62'53"



19.06 M / 62'53"



19.06 M / 62'53"



19.06 M / 62'53"



19.06 M / 62'53"



19.06 M / 62'53"



19.06 M / 62'53"

