

18.30 M / 60'3"



## CARACTÉRISTIQUES PRINCIPALES

**Builder****Designer**

Sunreef Yacht

**Built Year**

2021

**Length**

18.30 M / 60'3"

**Beam**

10.20 M / 33'46"

**Draft**

1.80 M / 5'91"

**35,000 EUR** 41,150 USD\* **par semaine**

\* Conversion approximative

🏠 Adresse:

3 Rue de la Loge L-1945 Luxembourg

📞 Contact

Thomas Peltier • P: +352.27.40.99.90 • M: +352.621.326.323

✉ E-mail:

t.peltier@seastemia.com

18.30 M / 60'3"

## SPÉCIFICATIONS

## DÉTAILS DU BATEAU

## TANKAGES

<b>Built Year</b>	2021	<b>Water</b>	800.00 litres / 211.20 US gals
<b>Fuel</b>	1,000.00 litres / 264.00 US gals		

## BUILDER / DESIGNER

<b>Builder</b>		<b>Accommodations Designer</b>	Sunreef Yacht
<b>Sleeps</b>	8 guests	<b>Courette</b>	4 double

DIMENSIONS  
Crew

<b>Bathroom</b>	4	<b>Dimensions Crew</b>	3
<b>Crew Berths</b>	3		
<b>Draft</b>	1.80 M / 5'91"		

## MACHINERY

<b>Engine Maker</b>	Volvo	<b>Number of Engines</b>	2
<b>Engine(s) type</b>	Inboard	<b>Engine(s) power</b>	150.00 hp

## PERFORMANCES

<b>Cruising Speed</b>	10.00 noeuds
-----------------------	--------------

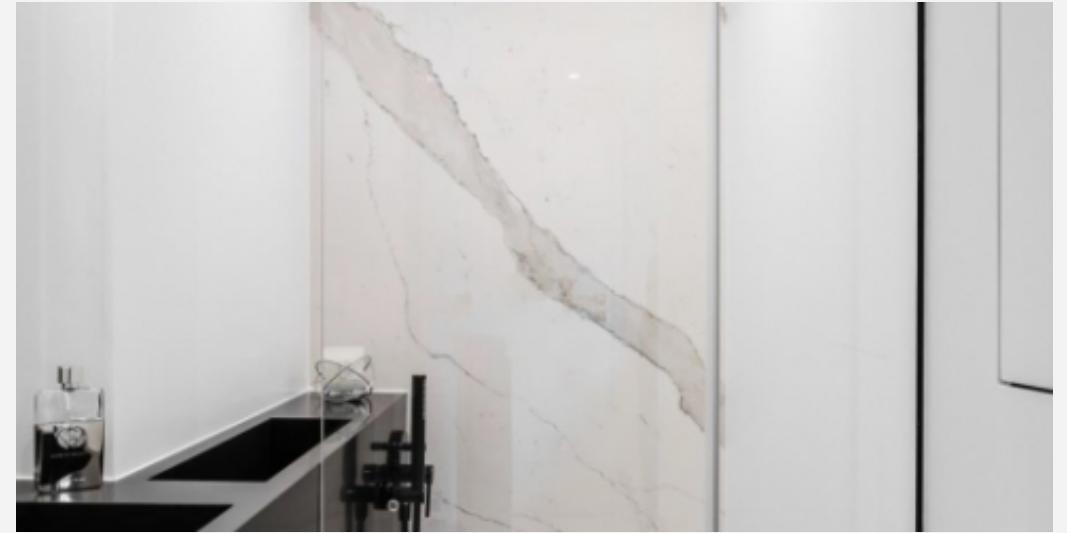
18.30 M / 60'3"



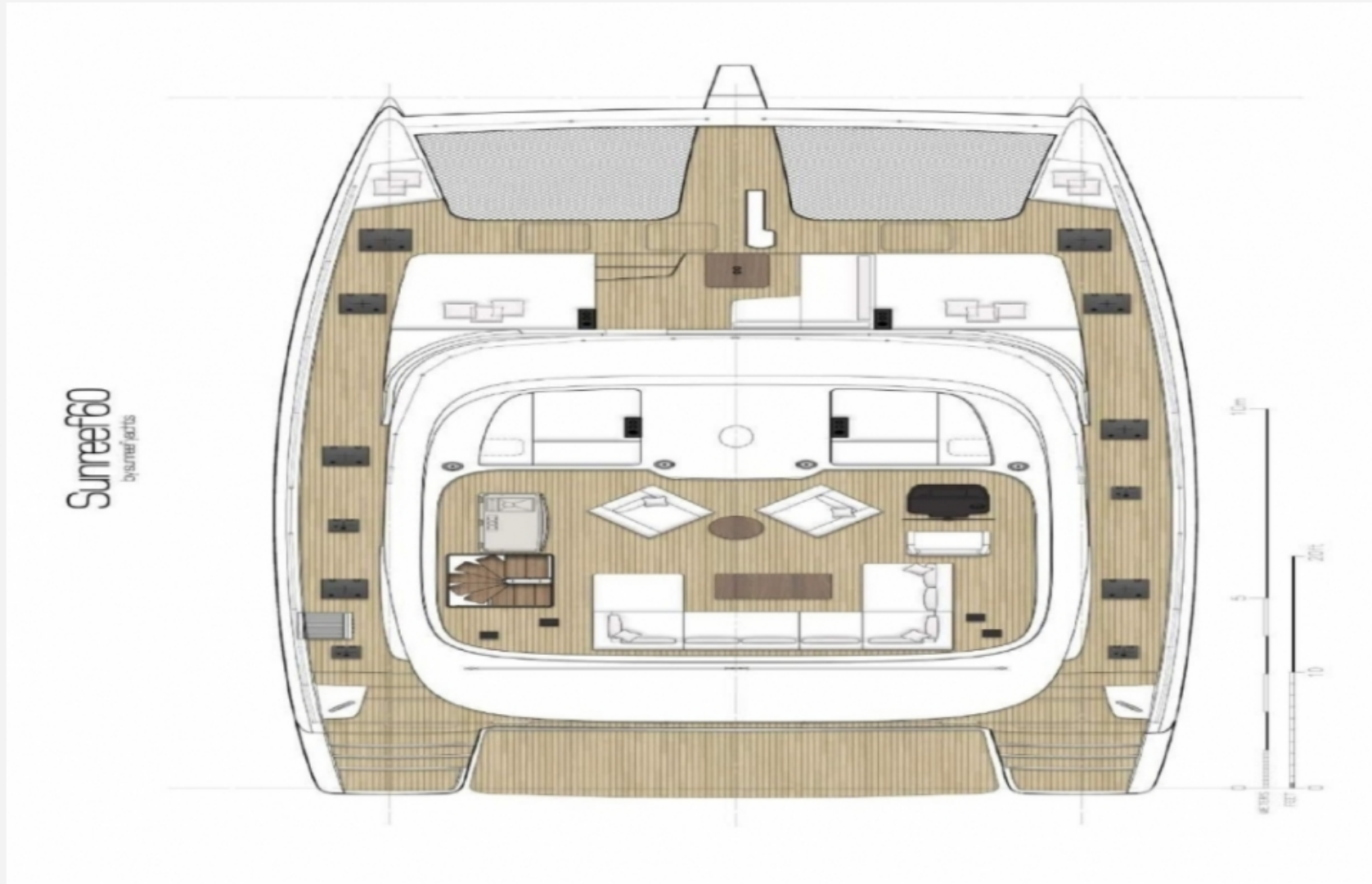
18.30 M / 60'3"



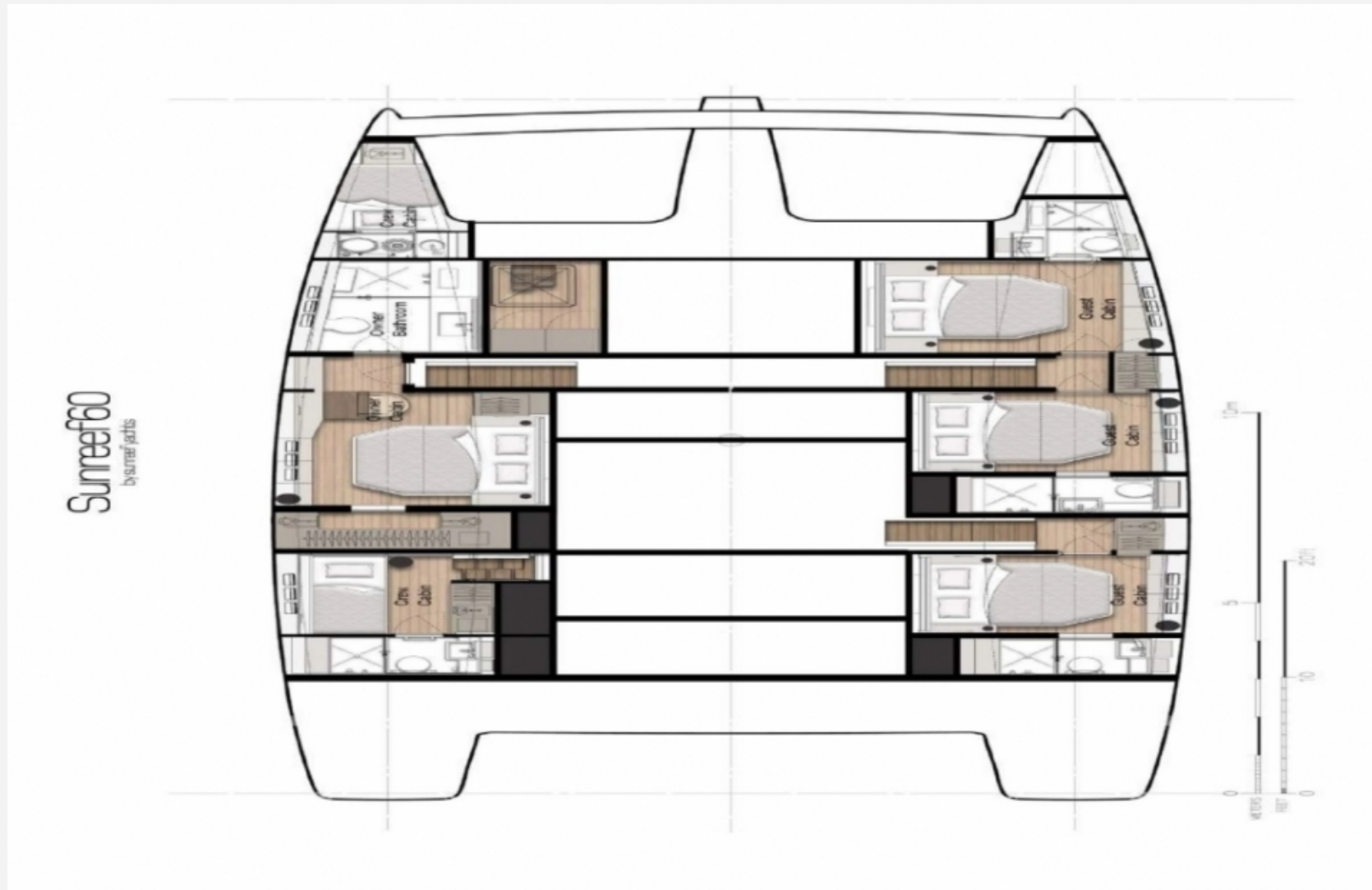
18.30 M / 60'3"



18.30 M / 60'3"



18.30 M / 60'3"



18.30 M / 60'3"

